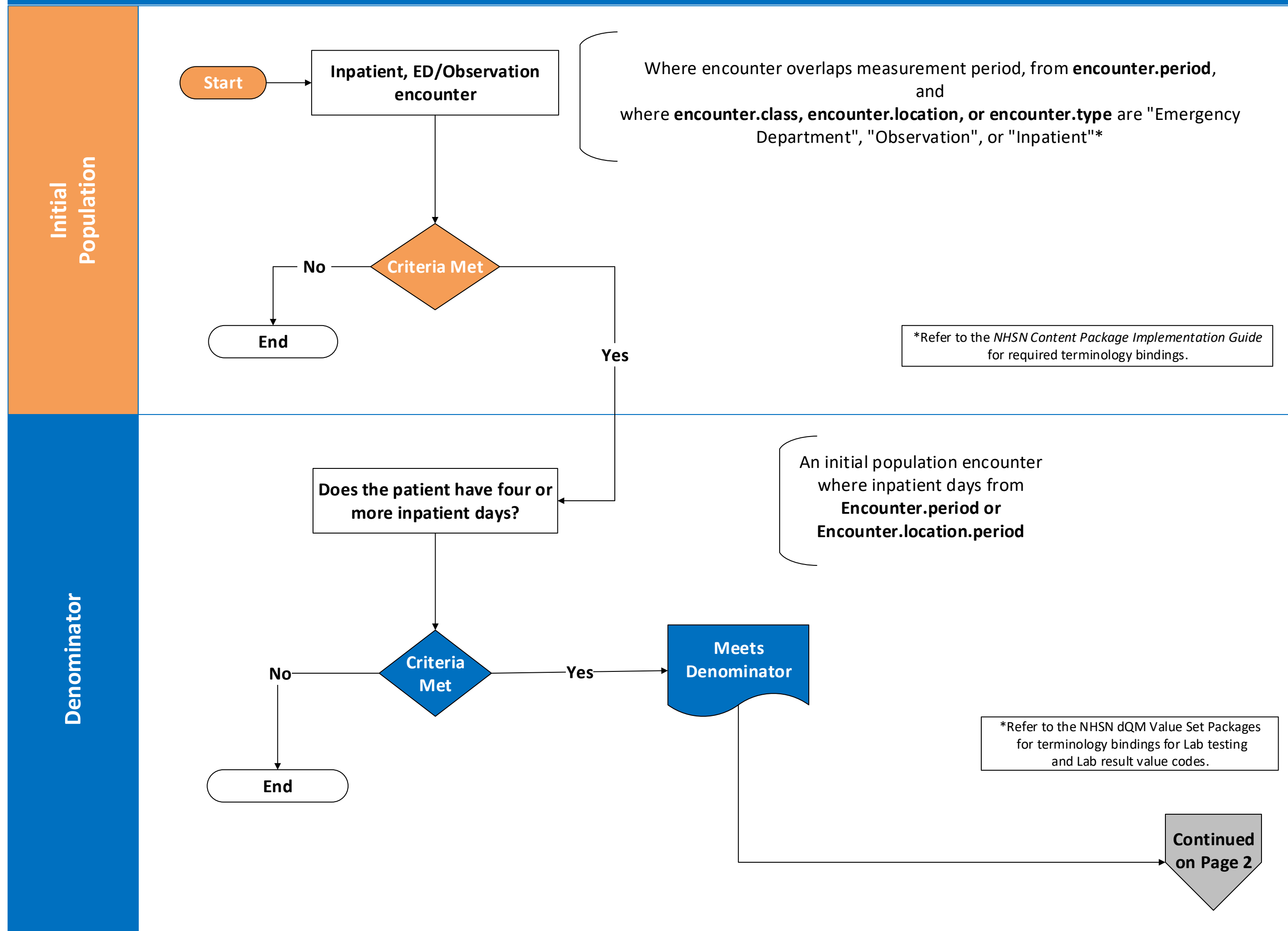
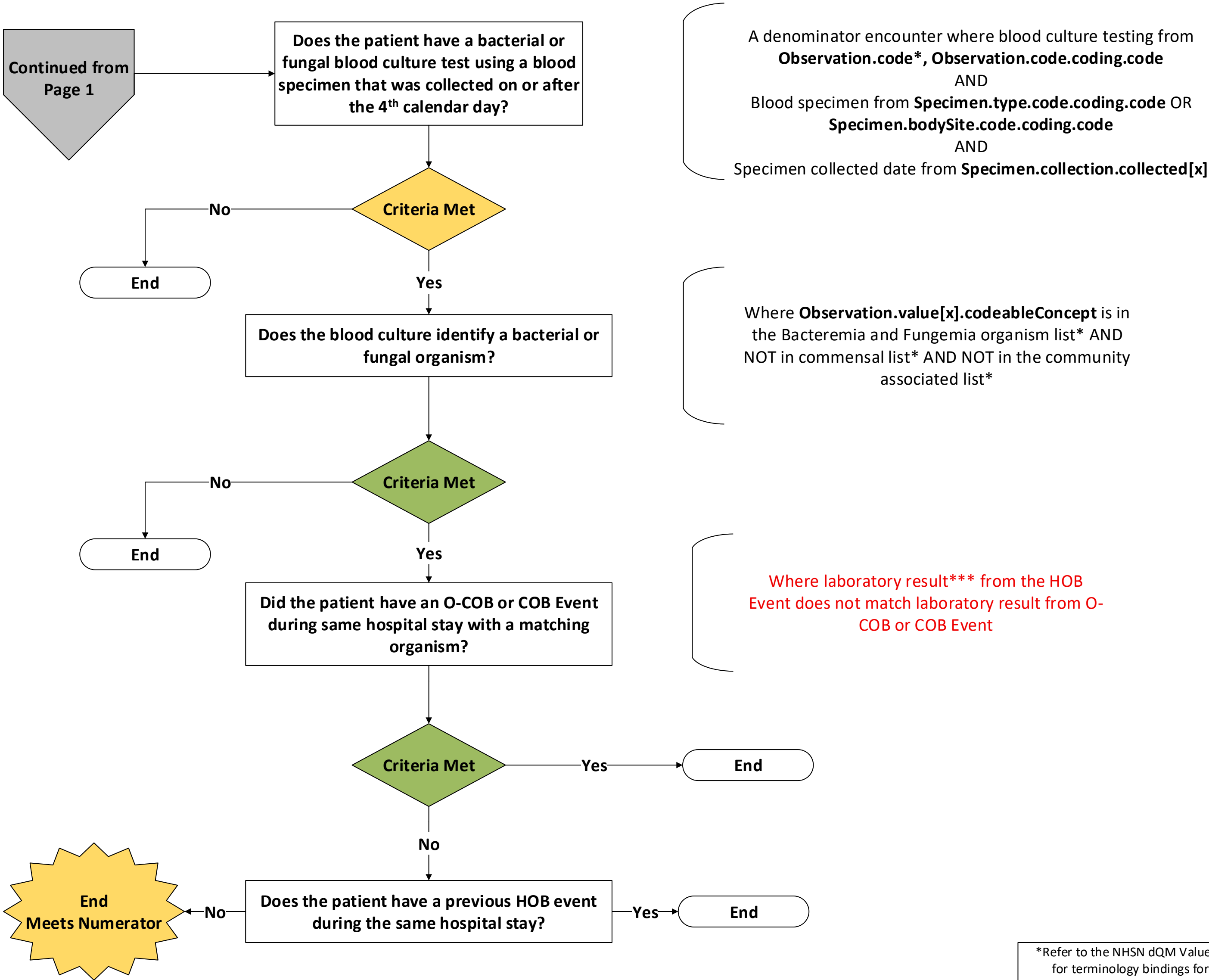


NHSN Hospital-Onset Bacteremia & Fungemia (HOB) Flow Diagram



NHSN Hospital-Onset Bacteremia & Fungemia (HOB) Flow Diagram

Numerator



NHSN Hospital-Onset Bacteremia & Fungemia (HOB) Flow Diagram	
Measure Description	Annual risk-adjusted standardized infection ratio (SIR) of Hospital-Onset Bacteremia & Fungemia events (HOB). The HOB SIR is reported annually and is calculated by dividing the number of observed Hospital-onset bacteremia & fungemia events divided by the number of predicted Hospital-onset bacteremia & fungemia events.
Initial Population	All encounters for patients of any age in an ED, observation, or inpatient location and/or all encounters for patients of any age with an ED, observation, inpatient, or short stay status that overlap the measurement period.
Denominator	The expected number of HOB events based on predictive models using facility- and patient data as predictors.
Denominator Exclusions	None
Numerator	<p>Number of observed Hospital Onset Bacteremia and Fungemia (HOB) events during the measurement period.</p> <p>An HOB event occurs when a patient has a bacterial or fungal organism identified from a blood specimen collected on the 4th calendar day of admission or later (where the date of admission to an inpatient location is calendar day 1).</p> <ol style="list-style-type: none"> 1. A patient can have a single HOB event per Hospital Stay 2. The date for the HOB will be attributed to the earliest date that a blood specimen is collected that has a bacterial or fungal organism identified on or after hospital day 4
Numerator Exclusions	<ol style="list-style-type: none"> 1. Bacterial skin commensals: The organism must NOT be included in the value set for bacterial skin commensals. 2. Previous matching COB or O-COB Event: A bacterial or fungal organism identified from a blood culture collected on hospital day 4 or later is excluded from an HOB event if the patient has an O-COB or COB event during the same Hospital Stay with at least one matching organism. 3. Previous HOB event: A patient with a previous HOB event is excluded from additional HOB events during the same Hospital Stay.